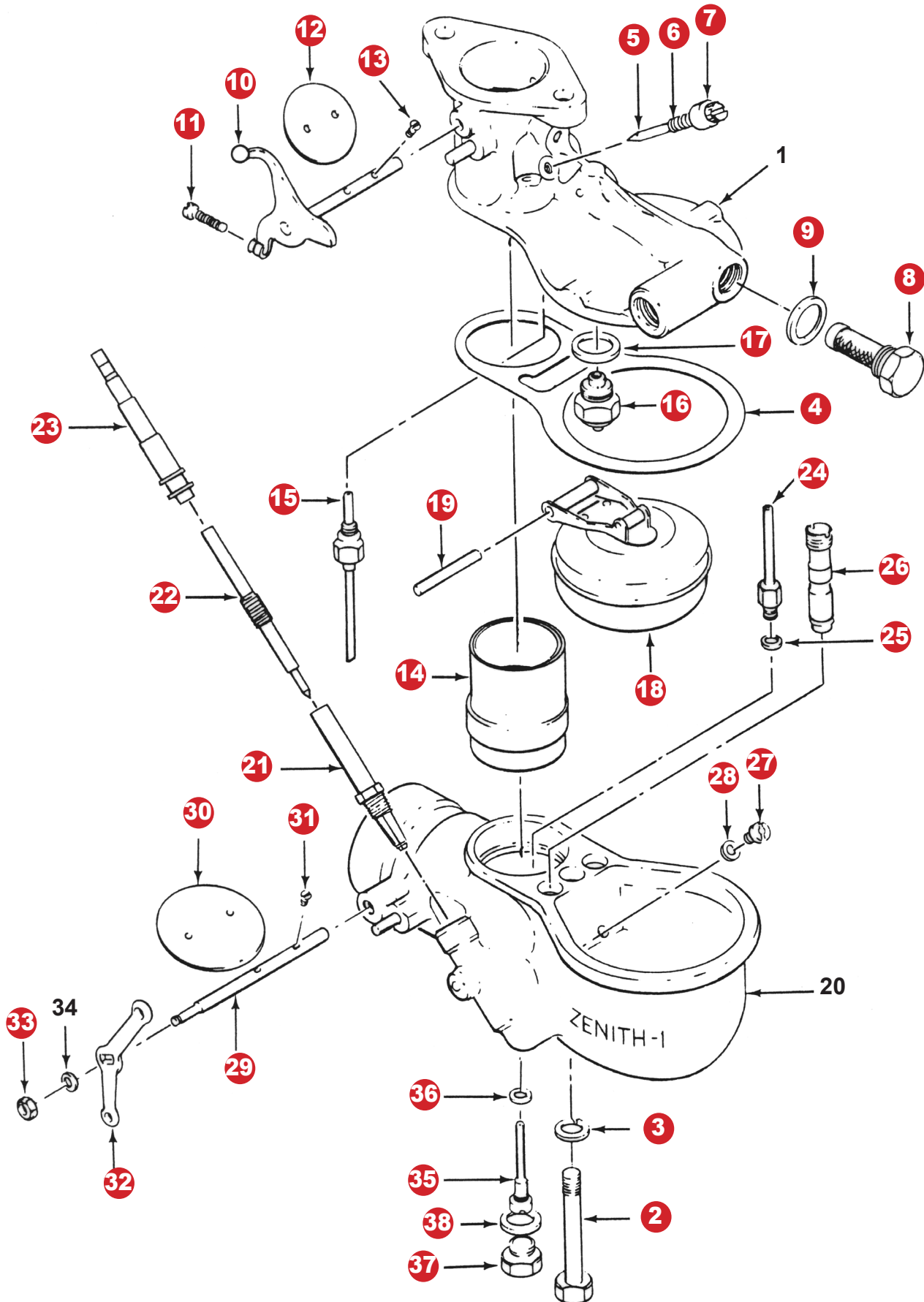


# Model A Ford CARBURETOR - Zenith I 1928-1931



**CLICKING ON THE RED NUMBERS OR CIRCLES WILL TAKE YOU TO THE PRODUCT DESCRIPTION AND QUICK ORDER FORM**

| <u>Index #</u> | <u>Part #</u>         | <u>Description</u>              |
|----------------|-----------------------|---------------------------------|
| 1              | Not Avail.            | Upper Carb Casting              |
| 2,3            | <b>A-9512</b>         | Carb Bolt & Lock Washer         |
| 4              | <b>A-9502-S</b>       | Bowl Gasket (part of set)       |
| 5,6,7          | <b>A-9577-AMB-BMB</b> | Idle Mixture Screw, Spring, Cap |
| 8              | <b>A-9559-B, C</b>    | Strainer Assembly               |
| 9              | <b>A-9502-S</b>       | Gasket (part of set)            |
| 10             | <b>A-9581</b>         | Throttle Shaft/Lever            |
| 11             | <b>A-9582-S</b>       | Throttle Stop Screw             |
| 12             | <b>A-9585</b>         | Throttle Plate                  |
| 13             | <b>A-9549-MB</b>      | Plate Screws                    |
| 14             | <b>A-9586</b>         | Venturi                         |
| 15             | <b>A-9542</b>         | Idle Jet                        |
| 16             | <b>A-9595</b>         | Float Valve (part of set)       |
| 17             | <b>A-9502-S</b>       | Gasket (part of set)            |
| 18             | <b>A-9550</b>         | Float                           |
| 19             | <b>A-9558</b>         | Float Pin                       |
| 20             | Not Avail.            | Lower Carb Casting              |
| 21             | <b>A-9528</b>         | Adjustment Needle Housing       |
| 22             | <b>A-9525</b>         | Adjustment Needle               |
| 23             | <b>A-9570-C-CP</b>    | Choke Driver                    |
| 24             | <b>A-9538</b>         | Cap Jet                         |
| 25             | <b>A-9502-S</b>       | Gasket ( part of set)           |
| 26             | <b>A-9545</b>         | Secondary Well                  |
| 27             | <b>A-9575</b>         | Compensator Jet                 |
| 28             | <b>A-9502-S</b>       | Gasket (part of set)            |
| 29             | <b>A-9547</b>         | Choke Shaft                     |
| 30             | <b>A-9549</b>         | Choke Plate                     |
| 31             | <b>A-9549-MB</b>      | Plate Screws                    |
| 32             | <b>A-9548, -B</b>     | Choke Lever                     |
| 33             | <b>A-9547-MB</b>      | Choke Shaft Nut                 |
| 34             | Not Avail.            | Lock Washer                     |
| 35             | <b>A-9534</b>         | Main Jet                        |
| 36             | <b>A-9502-S</b>       | Gasket (part of set)            |
| 37             | <b>A-9590</b>         | Drain Plug                      |
| 38             | <b>A-9502-S</b>       | Drain Plug Gasket               |