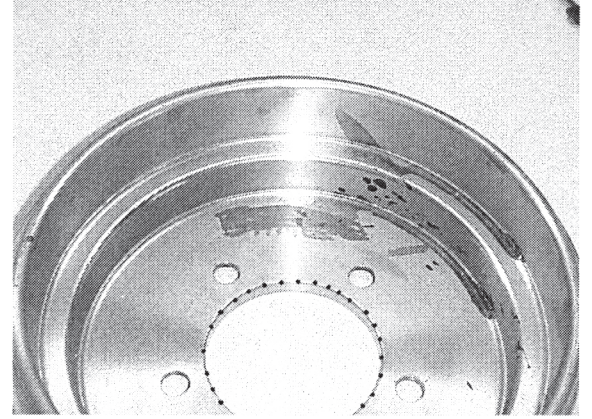


## A-1125 & A-1126 MOUNTING TIPS

When assembling your new brake drums to the hubs, it is very important that the surfaces of the drum and hub are drawn together tightly. BEFORE you swedge any studs, bolt the hub and drum together using normal hex head bolts and nuts. Try sliding a feeler gauge between the hub and drum, if you can't slide a feeler gauge between them, remove one of the bolts and nuts and start the swedging process. The purpose of bolting the two together is to minimize run-out when you get them trued after swedging.



If you were able to slide a feeler gauge between the hub and drum, see what is causing the two parts to not mate. A distorted hub surface will cause this problem, or we have seen a variation in the radius that is machined onto the hub (REAR ONLY) where the drum meets. The photo has a series of dots showing where this radius could be giving you trouble. If the drum is bottoming out where we have indicated with dots, take a burr grinder or file and taper the opening slightly to allow clearance for the radius. You will have to bolt the drum to the hub again and check the clearance with a feeler gauge to know if you have removed enough material from that edge.